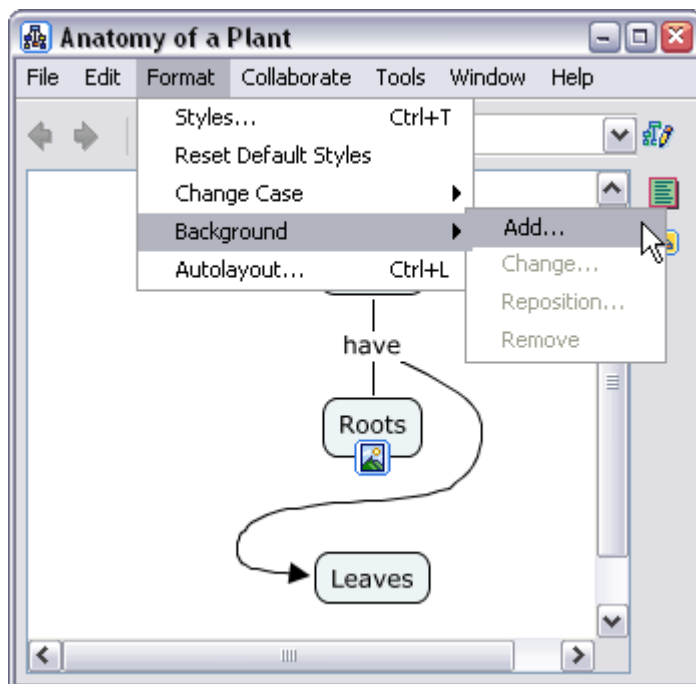


Change Backgrounds

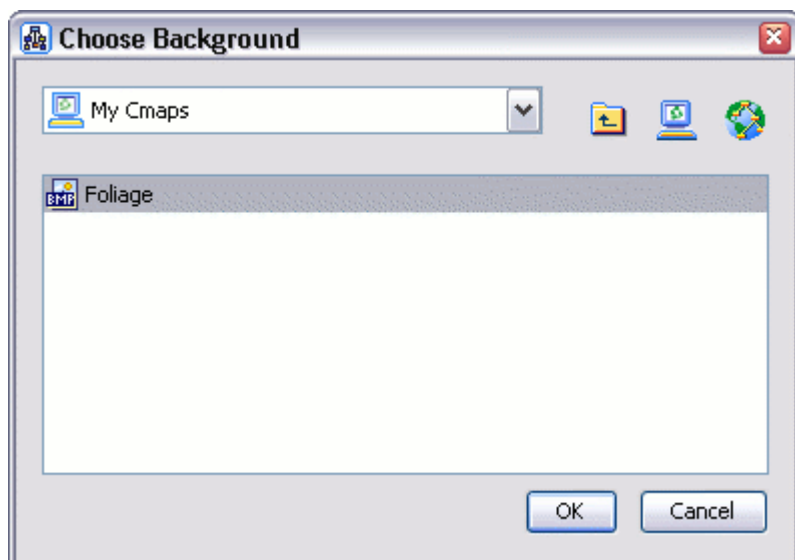
[Change Cmap Background](#) [Change Concept Background](#)

From an open Cmap:

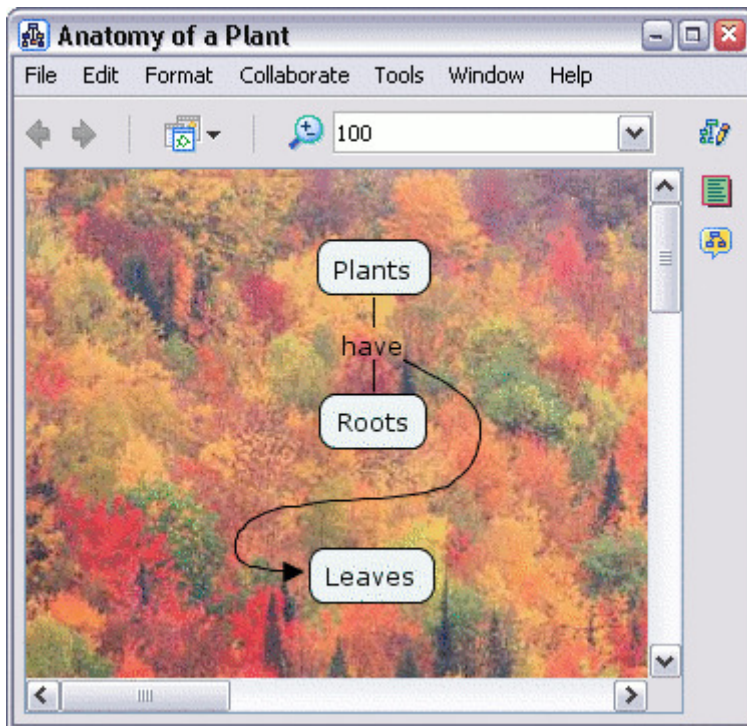
You can make an image appear in the background of a Cmap. To give a Cmap a background image, select **Format**, then **Add...** from the **Background** sub-menu.



The "Choose Background" window will open so that you may locate an image file. Click **OK** to place the selected image into the background of the active Cmap.

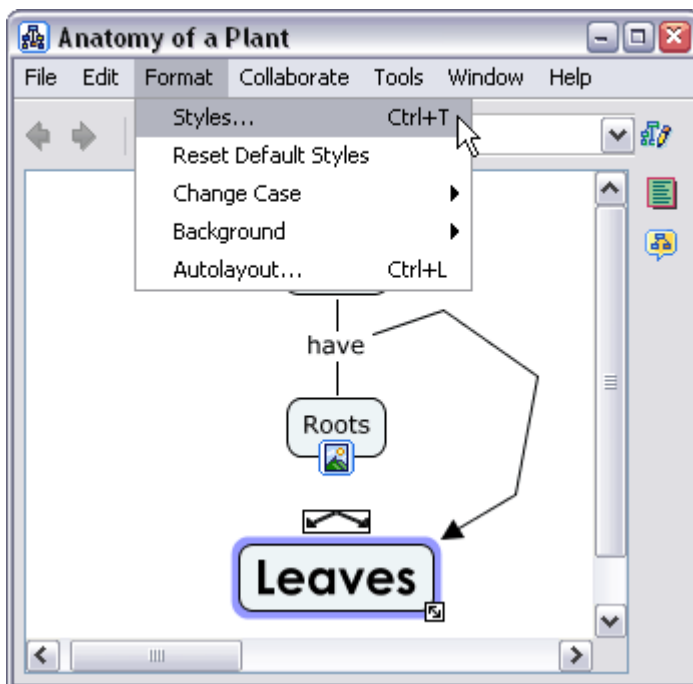


Now when viewing the Cmap, the background image selected appears as the Cmap's background.



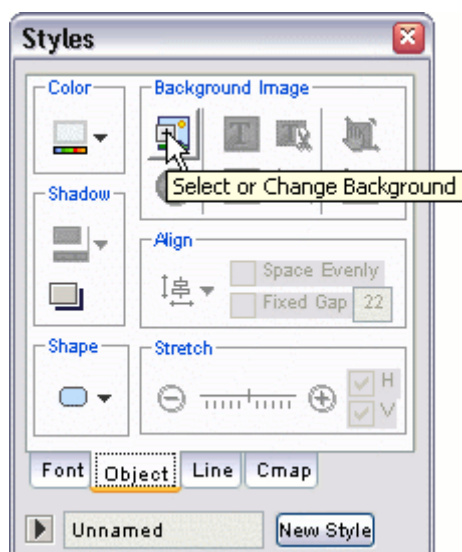
From an open Cmap:

You can make an image appear in the background of a concept. To give a concept a background image, select the concept, then select **Styles...** from the **Format** menu.



Open the "Styles" window to the **Object** tab. To continue adding an image to the background of a

concept, click **Select or Change Background**. The "Choose Background" window will appear where you can browse for an image. Click **OK** from the "Choose Background" window to add the selected image to the background of a concept.



Now when viewing the Cmap, the background image selected will appear as the concept's background.

