

1.1 Offset set up

To enter set up, press the 'S' key until the following menu appears:



```
Menu"          hh:mm:ss DD/MM/YYYY
T=Time C=Setup S=Exit->
```

Picture 1

From the menu shown in Picture 1, select the option Setup by striking the key 'C' and then the key 'Return'. The river level offset is the first parameter and the data logger shows the current value. Strike the key 'M' to modify it (a blinking cursor will appear) and just enter the new value **without changing the position of the cursor**. If you enter a wrong digit, you can overwrite it by first striking the ← key:



```
M = modify Sel. = Arrow up/down S = exit
1 ) Level Offset= 0
```

Picture 2

When you entered the new value, press 'Return', wait until the new value is displayed and then press the key 'S' to reboot the data logger.

1.2 Configuration of the data logger

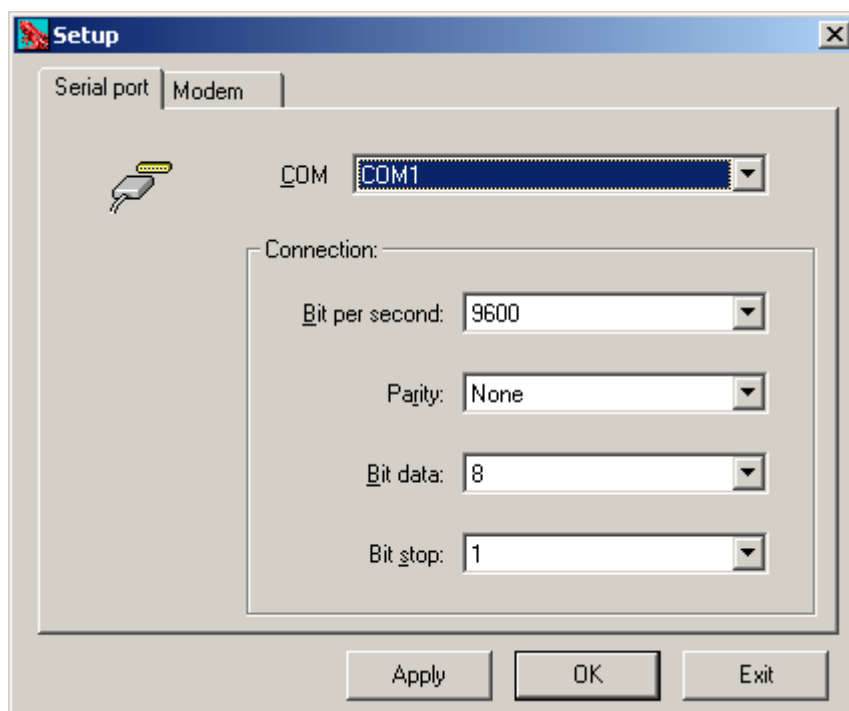
1.2.1 Required material

- A laptop with the software GECO installed
- The configuration file. The configuration file has the extension ocf and can be opened directly with the software GECO.

1.2.2 Procedure

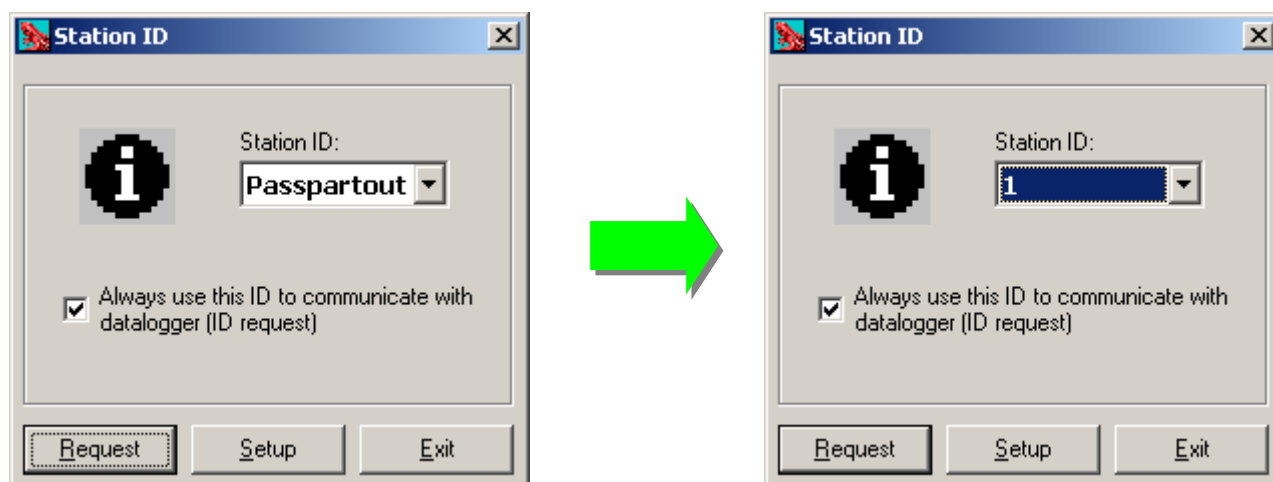
First of all connect the laptop to the station using the serial cable in the box.

- Set the correct communication port and the parameters as shown in Picture 3: **Tools ▶ Settings**



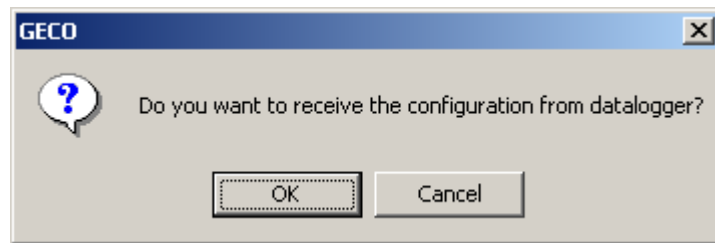
Picture 3

- Check the station ID: **Execute ▶ Station ID ▶ Request**

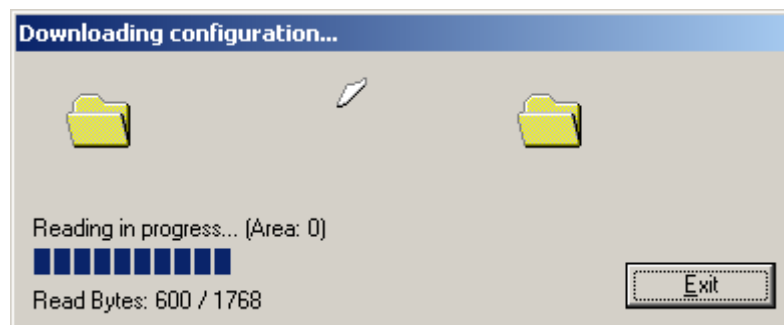


Picture 4

- Receive the configuration and save it as safe backup copy: **File ▶ Receive... ▶ OK**

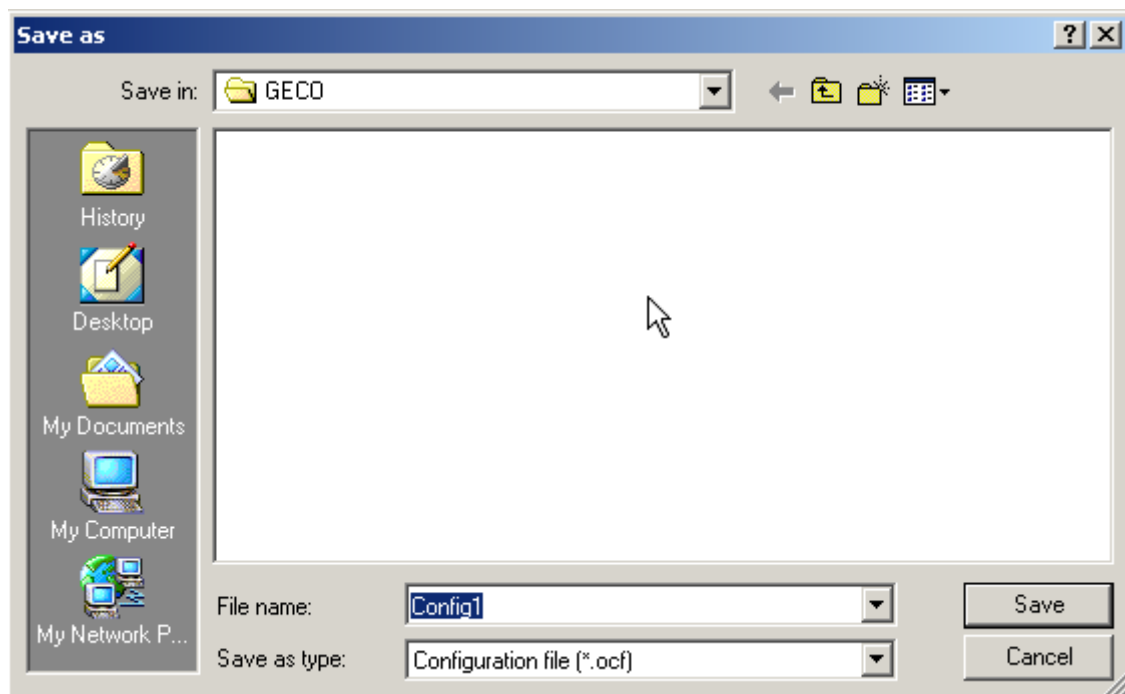


Picture 5



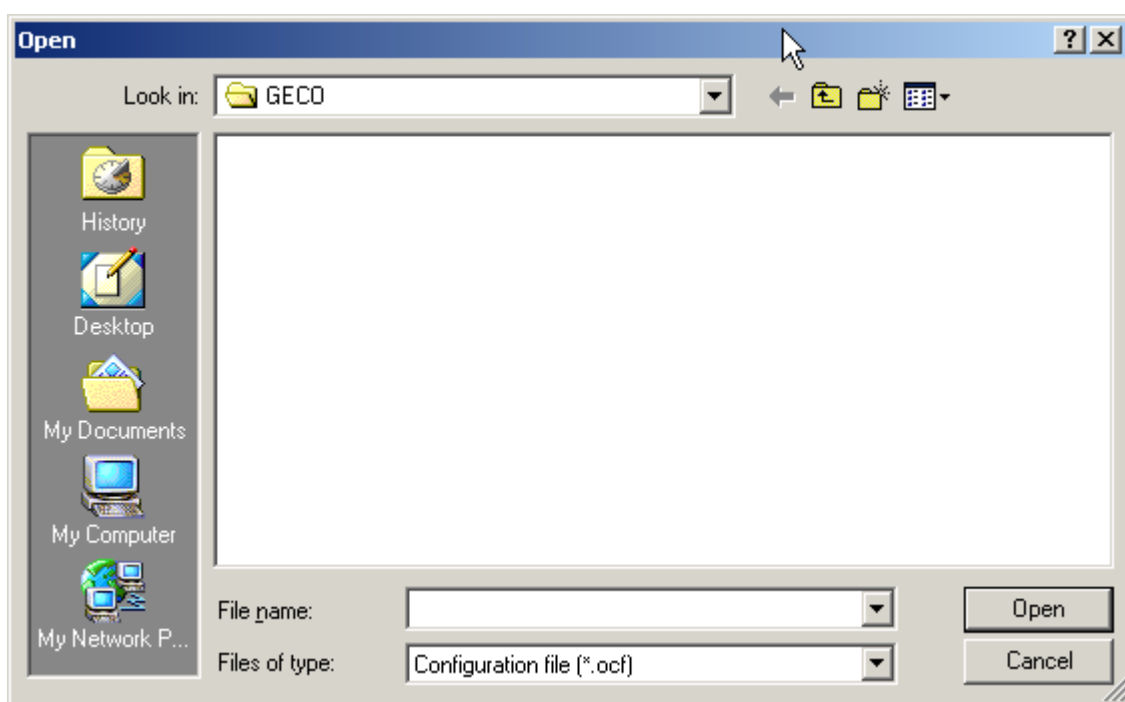
Picture 6

- **File ▶ Save**

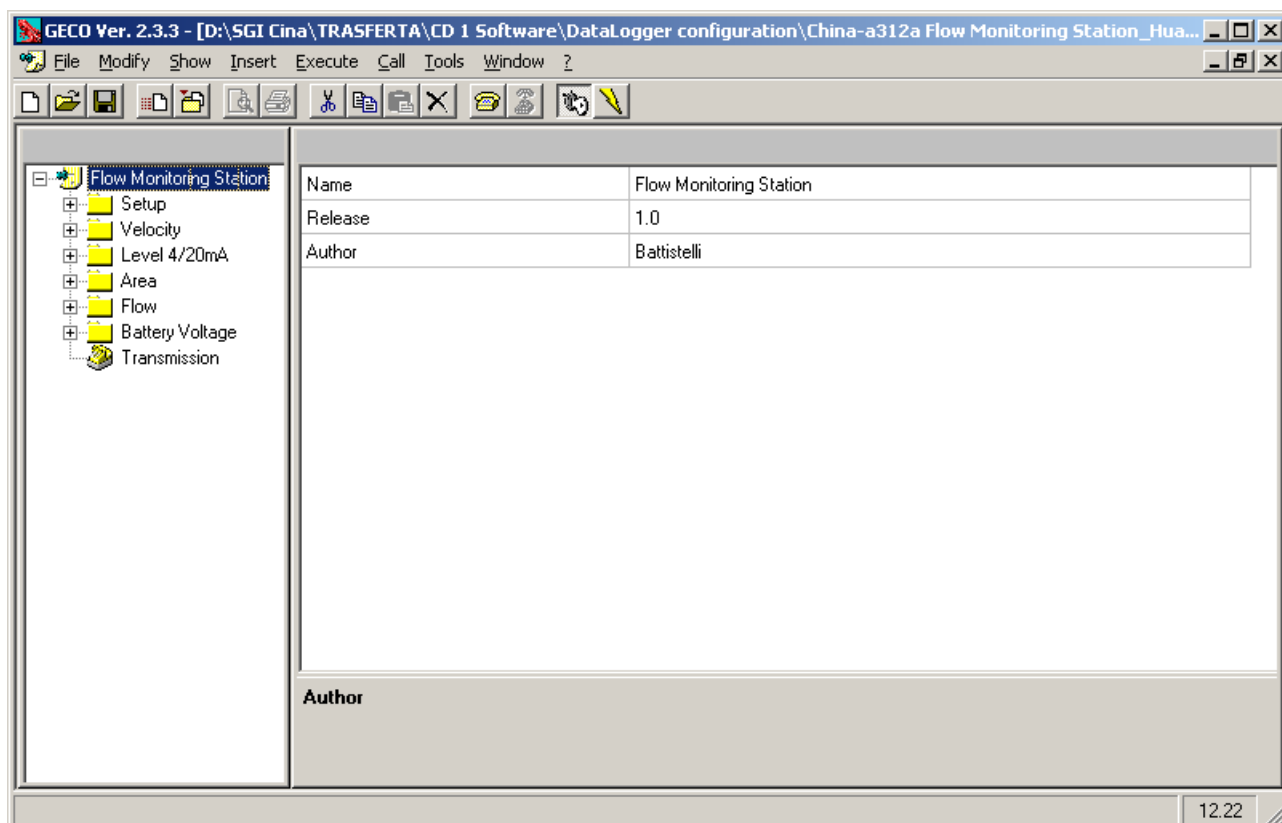


Picture 7

- Open the new configuration file ocf: **File ▶ Open...**

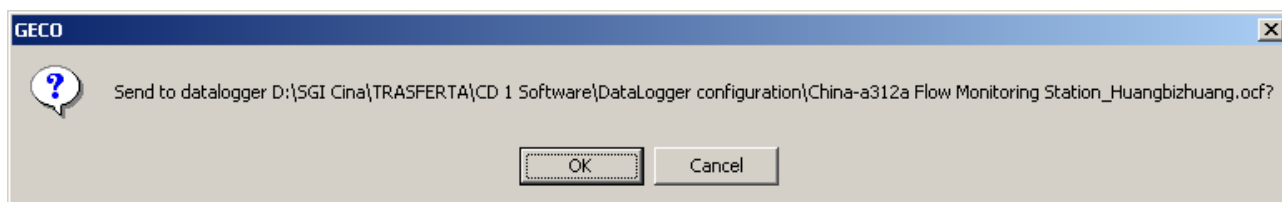


Picture 8

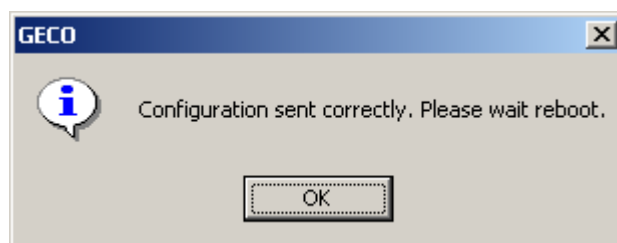


Picture 9

- Send it to the data logger: **File ▶ Send... ▶ OK**



Picture 10



Picture 11

The data logger restart automatically.