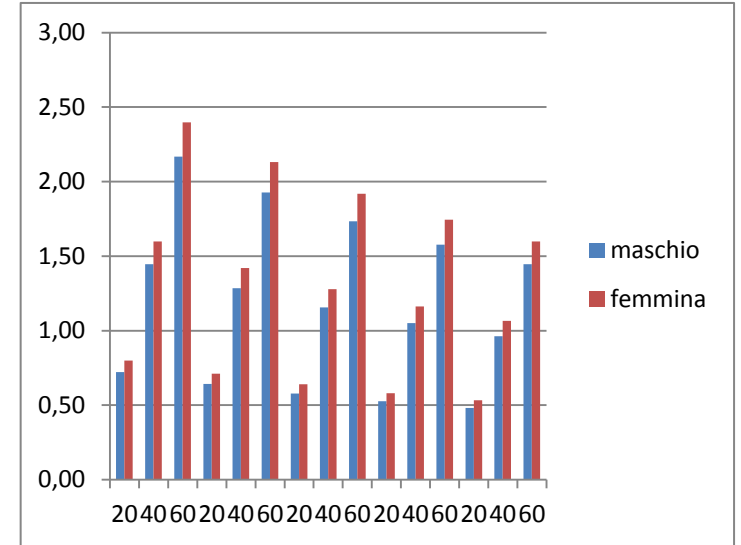
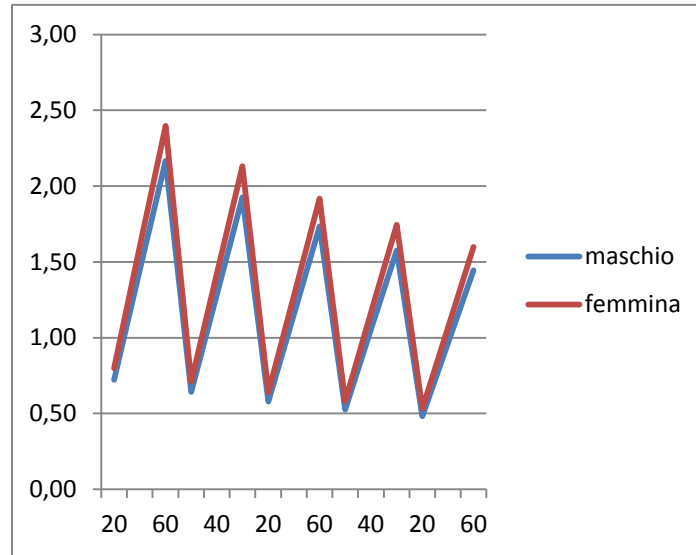


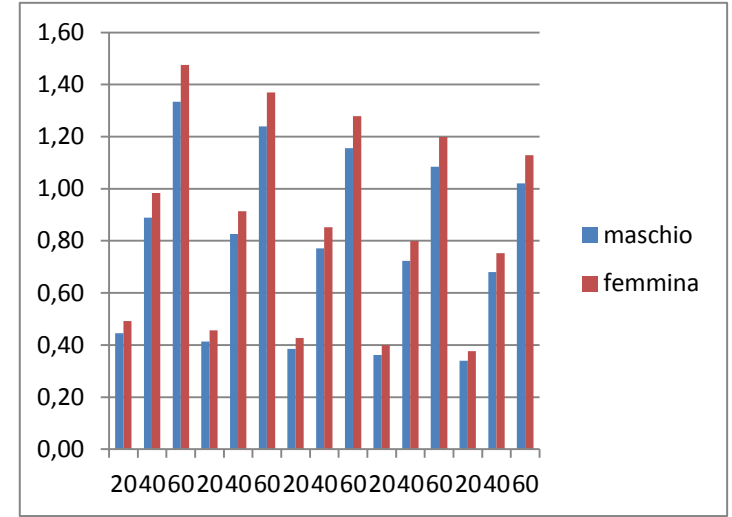
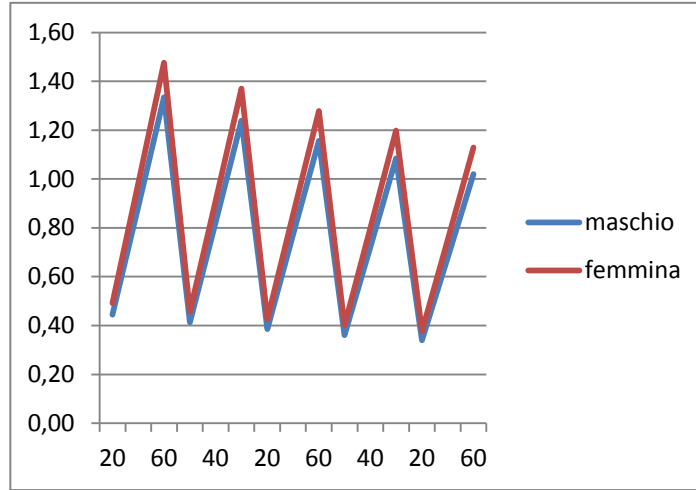
P (kg) 40 45 50 55 60

ga (%vol)		Ta (g/l)	
		maschio	femmina
20	20	0,72	0,80
40	40	1,45	1,60
60	60	2,17	2,40
20	20	0,64	0,71
40	40	1,28	1,42
60	60	1,93	2,13
20	20	0,58	0,64
40	40	1,16	1,28
60	60	1,73	1,92
20	20	0,53	0,58
40	40	1,05	1,16
60	60	1,58	1,74
20	20	0,48	0,53
40	40	0,96	1,07
60	60	1,45	1,60



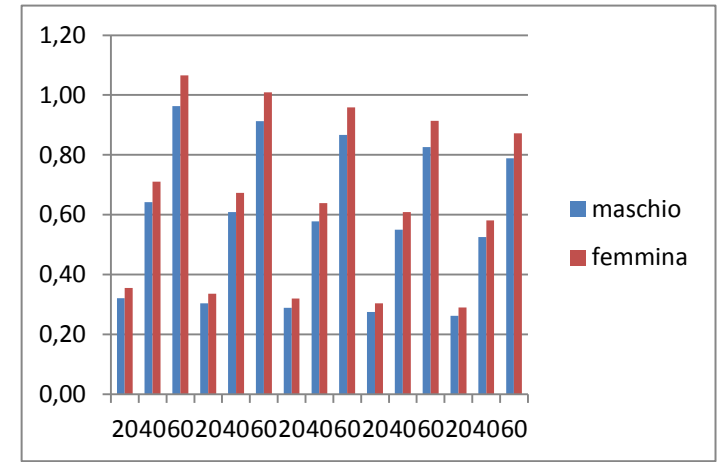
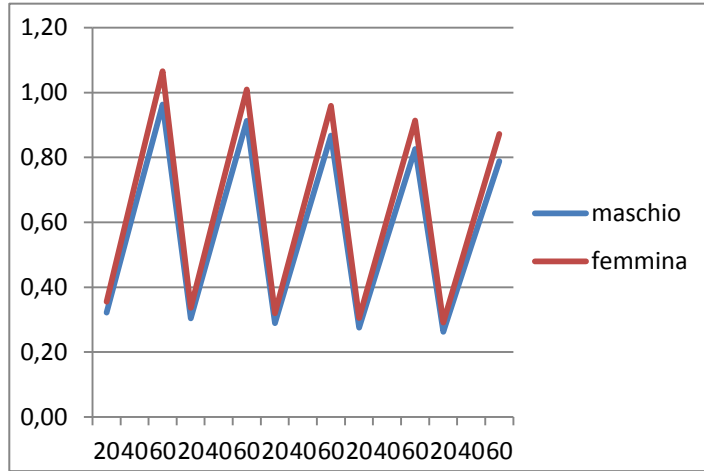
P (kg) 65 70 75 80 85

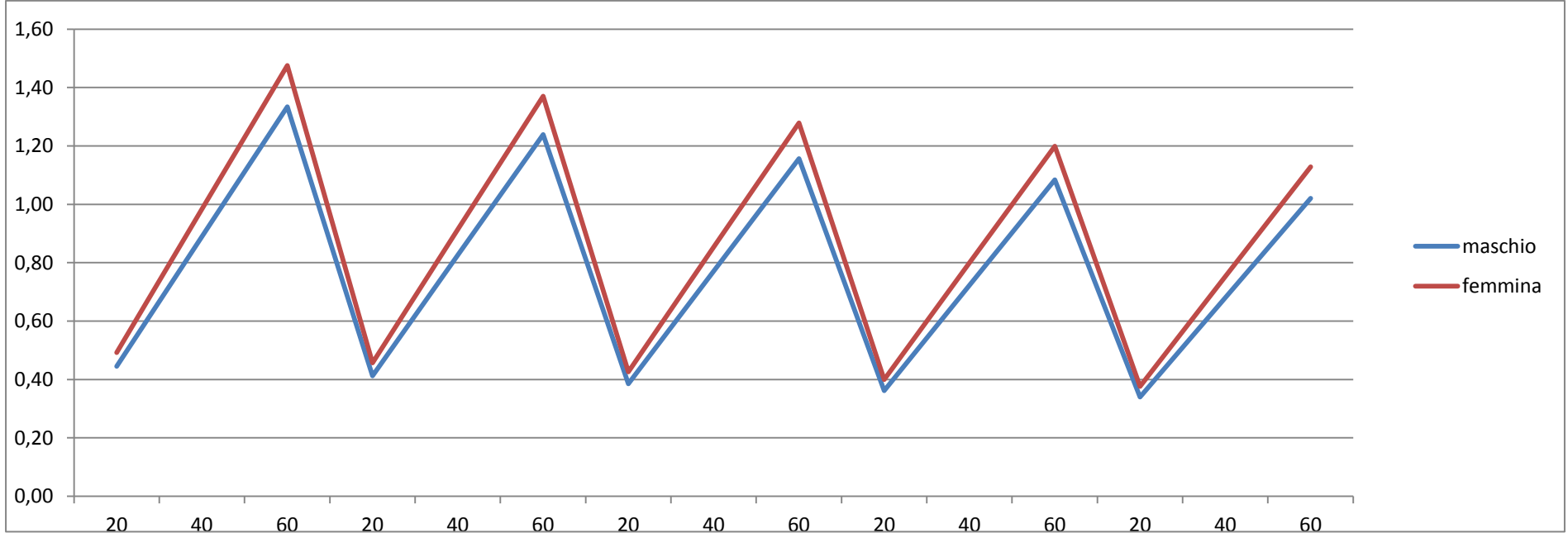
ga (%vol)		Ta (g/l)	
		maschio	femmina
20	20	0,44	0,49
40	40	0,89	0,98
60	60	1,33	1,48
20	20	0,41	0,46
40	40	0,83	0,91
60	60	1,24	1,37
20	20	0,39	0,43
40	40	0,77	0,85
60	60	1,16	1,28
20	20	0,36	0,40
40	40	0,72	0,80
60	60	1,08	1,20
20	20	0,34	0,38
40	40	0,68	0,75
60	60	1,02	1,13



P (kg) 90 95 100 105 110

ga (%vol)	Ta (g/l)	
	maschio	femmina
20	0,32	0,36
40	0,64	0,71
60	0,96	1,07
20	0,30	0,34
40	0,61	0,67
60	0,91	1,01
20	0,29	0,32
40	0,58	0,64
60	0,87	0,96
20	0,28	0,30
40	0,55	0,61
60	0,83	0,91
20	0,26	0,29
40	0,53	0,58
60	0,79	0,87





kg

65

70

75

80

85