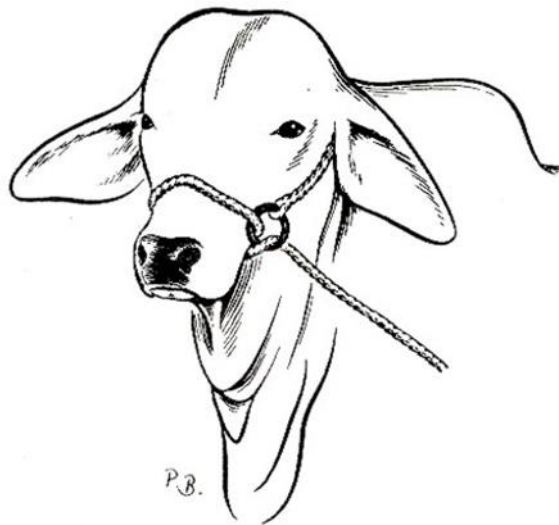


Cattle Restraint Methods

The procedure requires accuracy therefore restraining animal movement is critical for the success of the technique. A crush with a headlock offers good restraint that can be further enhanced by the use of a halter and nose pliers. Alternatively, the procedure may be performed using general anaesthesia, for which a crush has been strategically placed to allow release of the patient into a holding pen where the patient is bedded down onto a grass floored area.

❖ Halter

The primary method of restraint used in dairy cattle is the halter. The halter is sometimes used in beef cattle to control the head after the animal is restrained in a chute. The halter can be made of cotton, nylon, twine, etc. It is mainly used to control the head and once the head is controlled, the animal can be handled with relative ease. The proper placement of the halter is important and it begins with making sure the lead is placed on the left side of the animals head. A simple rhyme to help remember how to correctly place the halter on the head is a follows; "the part that draws goes under the jaws." This leaves the top part of the halter to go over the poll and behind the ears.



❖ Cattle Crush



❖ Squeeze Chute



❖ Nose Tongs

