

THE EFFECTS OF POLLUTION

NEGATIVE

- Particles of PM 2.5s and PM 10s .
- Blood stream diseases
- Respiratory damage

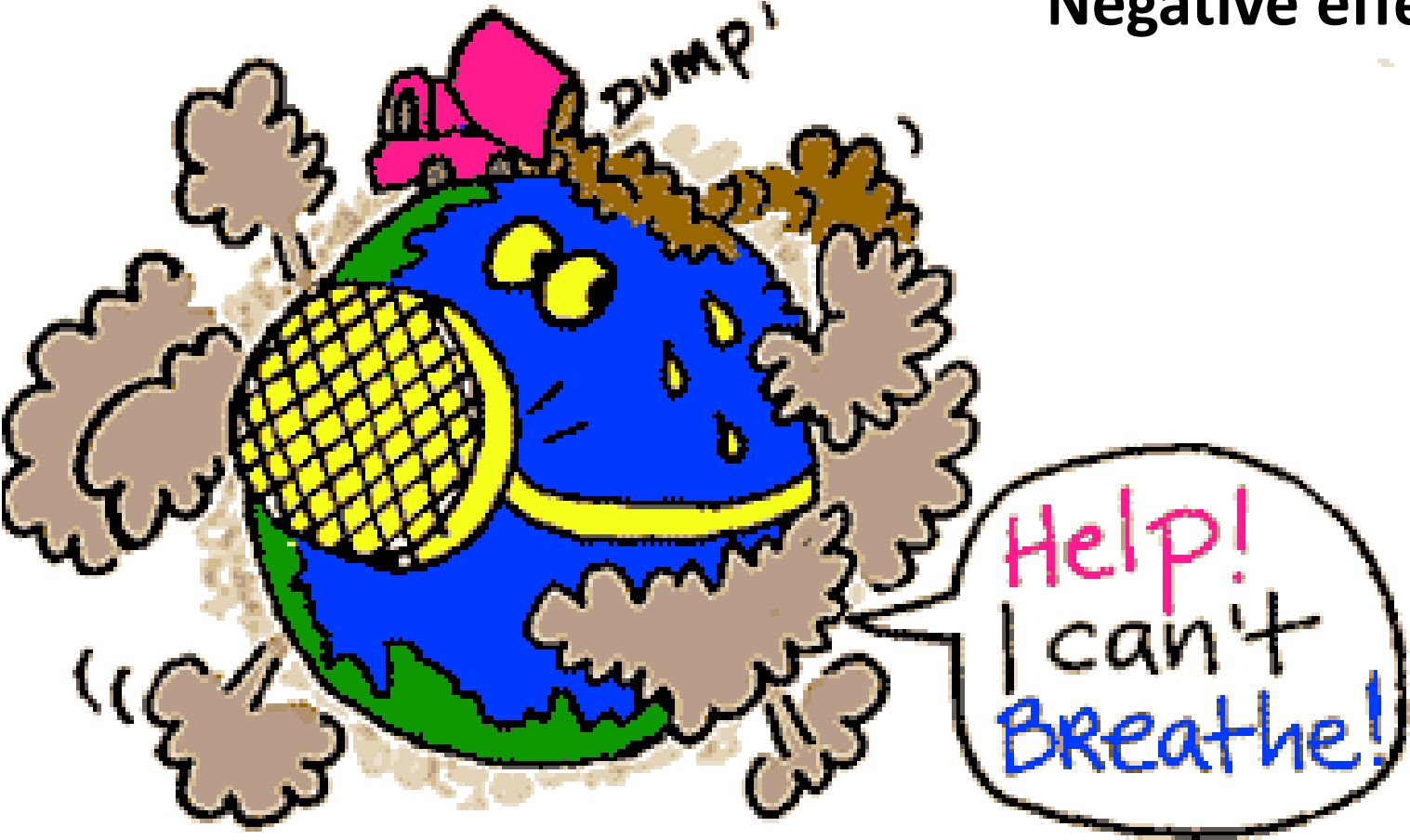


ASPECTS

POSITIVE

- Good quality of air
- Monitoring stations

Negative effects:



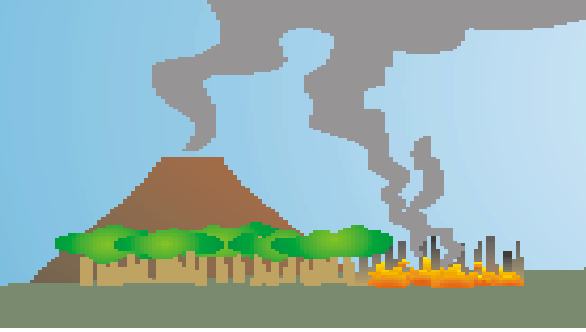
This image represents the pollution of city made up of particles called PM 2.5s and PM 10s



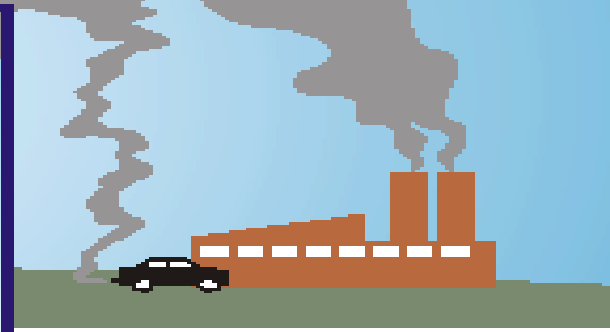
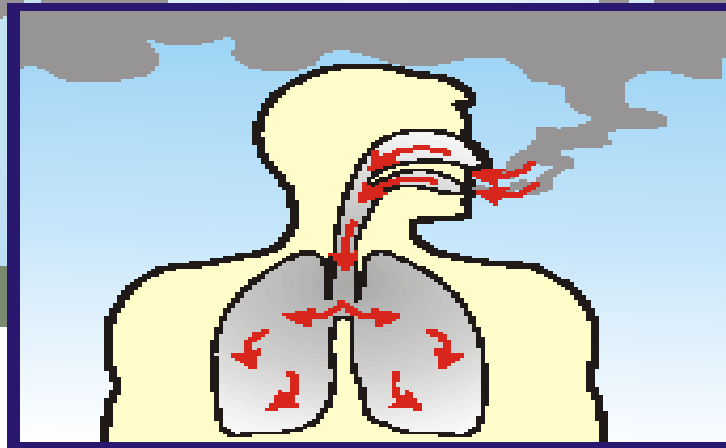
**The air quality in the big cities is often full of pollution particles.
The air should be clear to guaranteed a good quality of life.**



Air Pollution



Natural

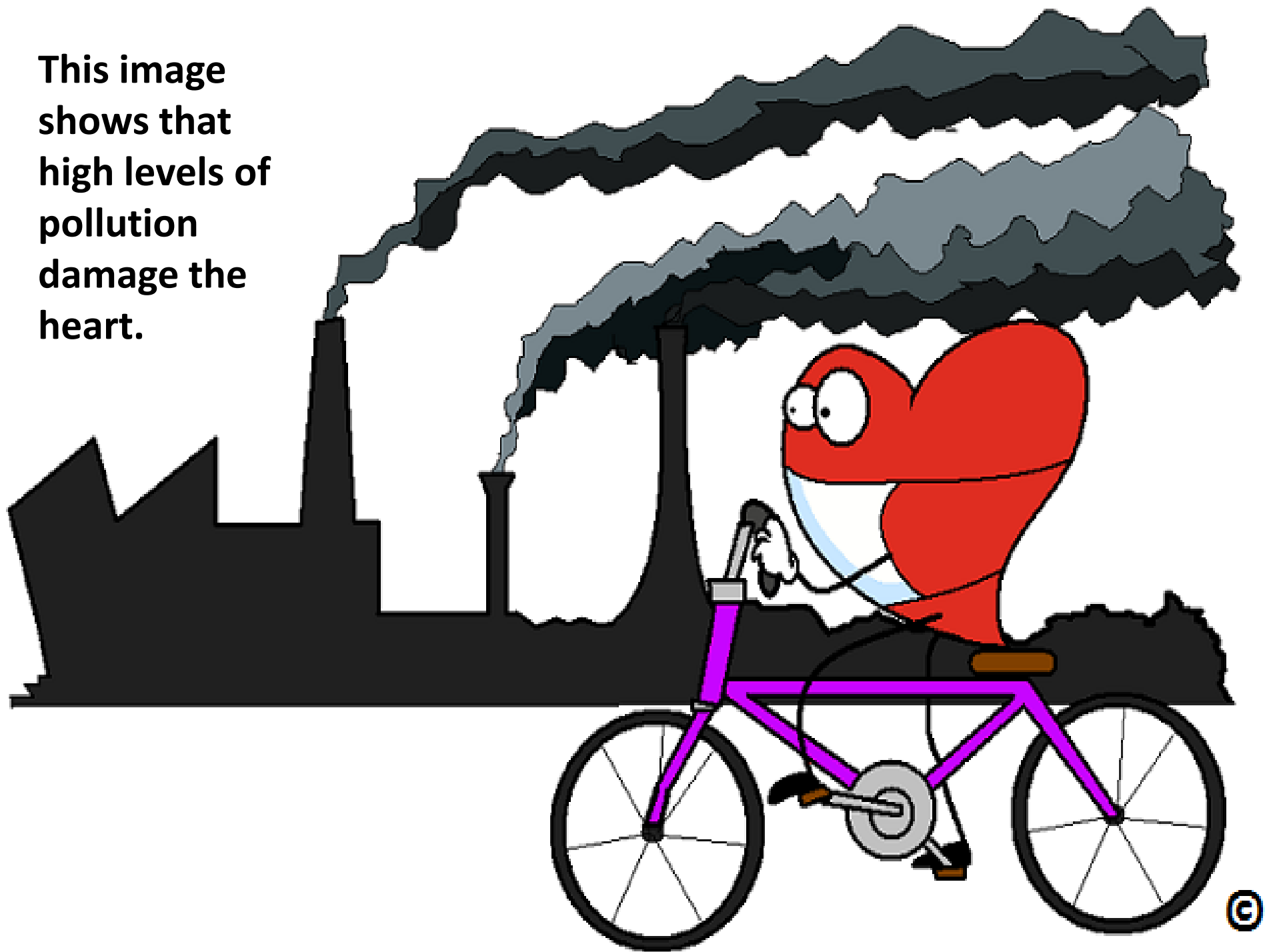


Manufactured



Many studies have shown that there is a connection between high level of pollution and damage respiratory.

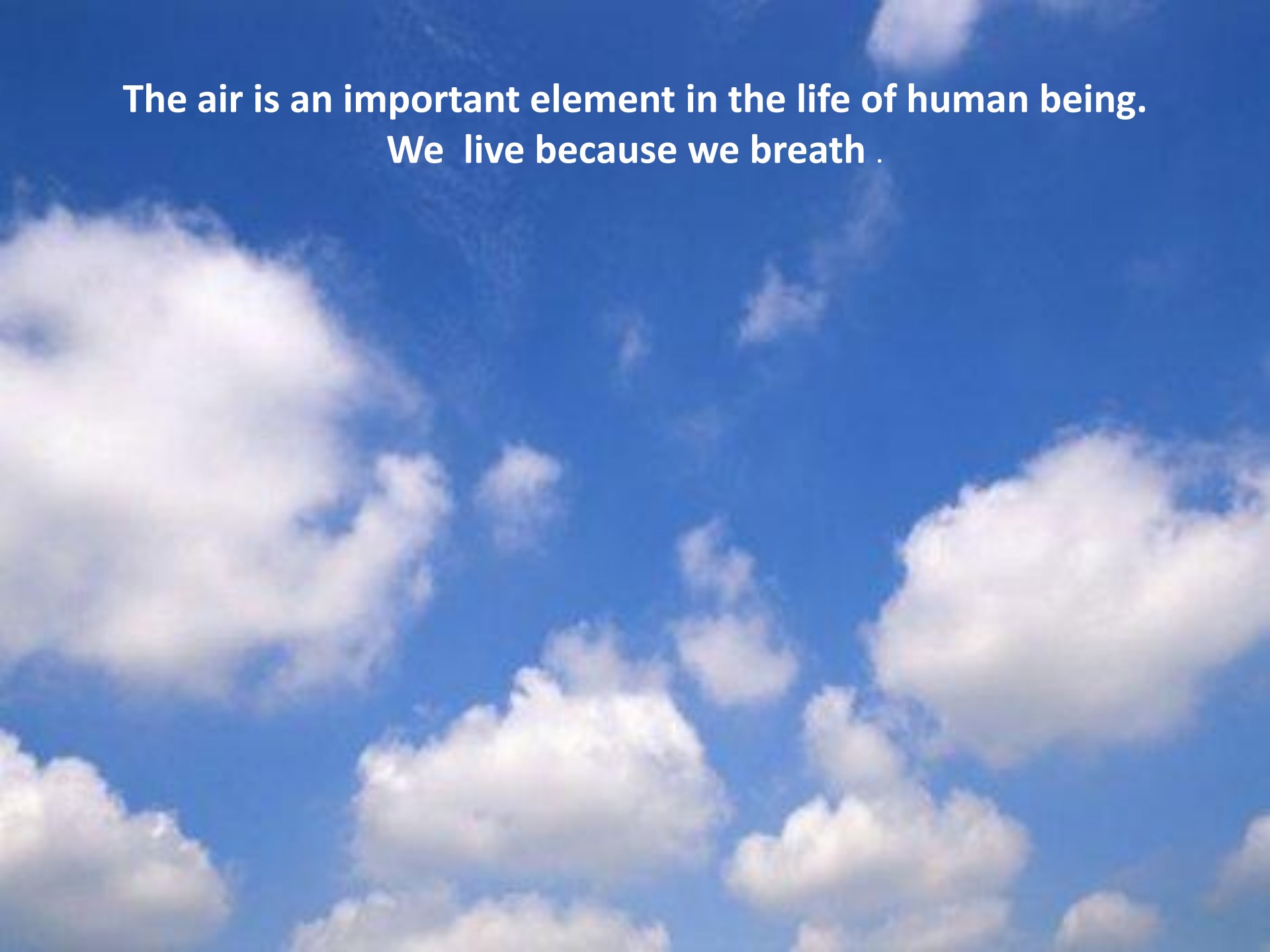
This image shows that high levels of pollution damage the heart.





Positive effects

**The air is an important element in the life of human being.
We live because we breath .**



This image shows a researcher who is monitoring the level of air pollution



Michela Teresa Intrieri

Francesca Puterio

IL

*Let's clean
our world!*

