

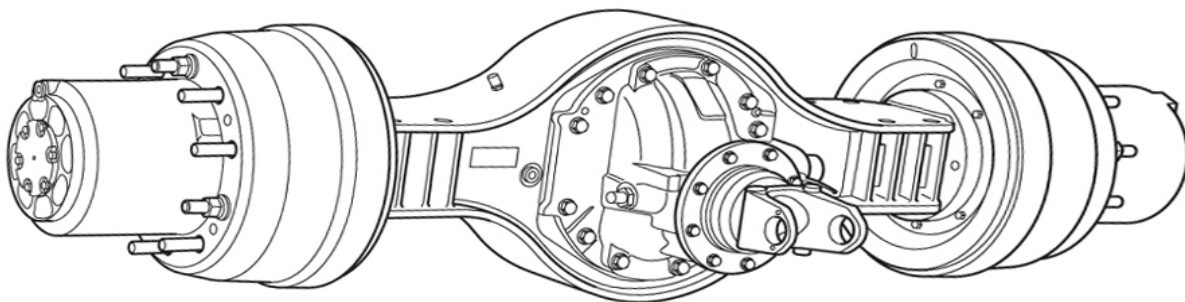


an *ArvinMeritor* brand

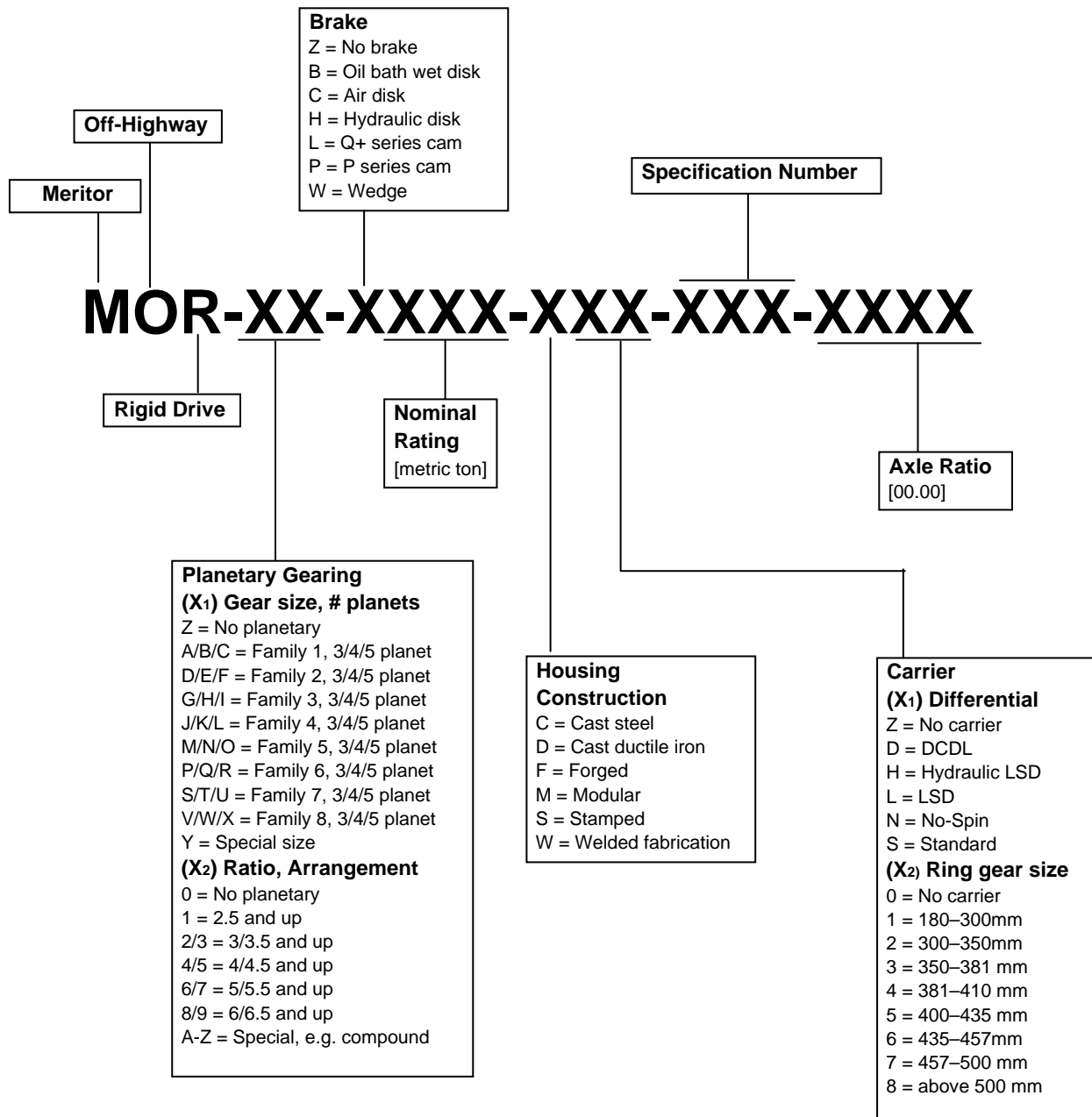
Revised 10/2010

Heavy-Duty Single Rear Axles for Port/Terminal Tractors

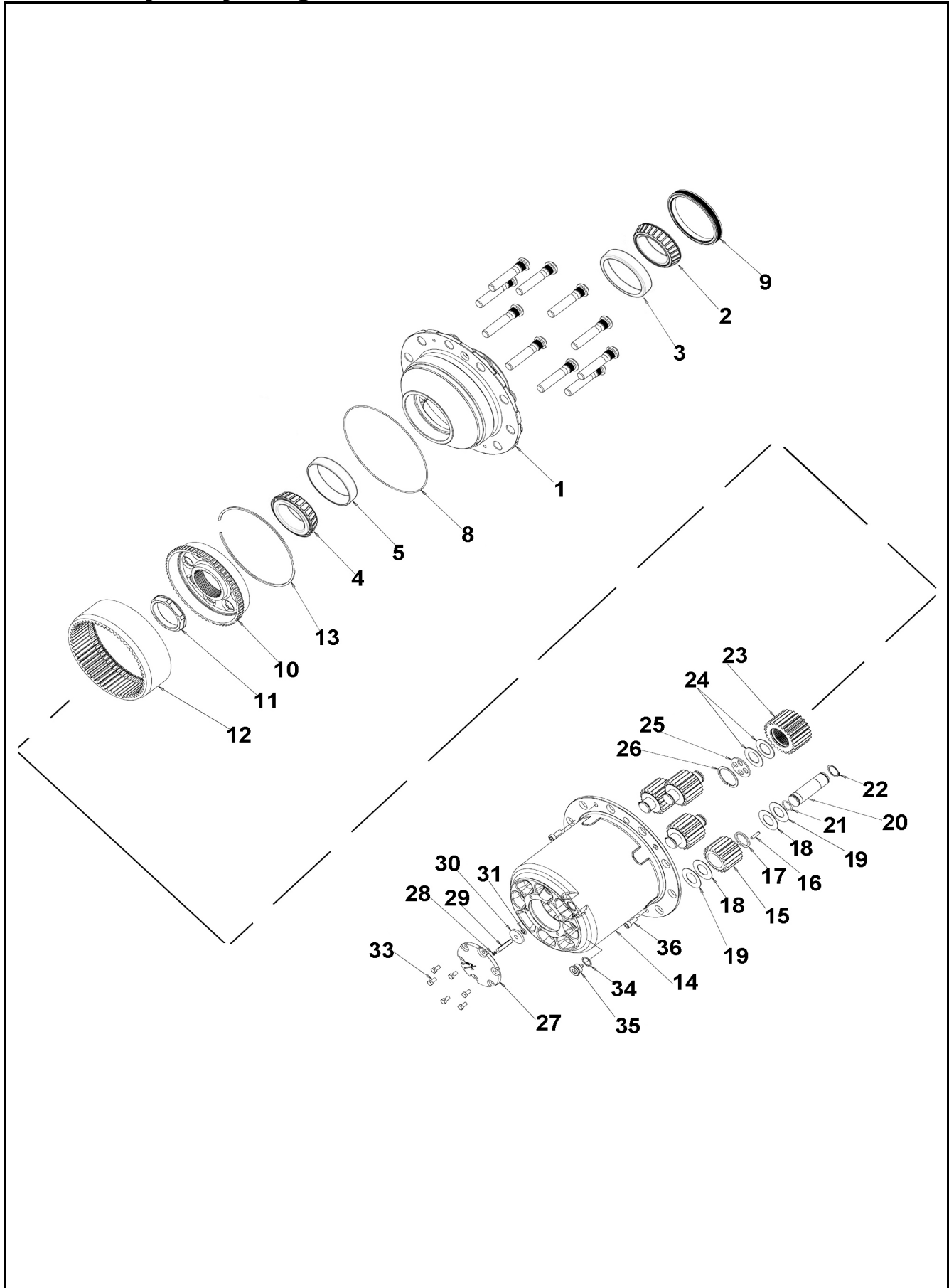
Parts Catalog PB-1037



Off Highway Axle Identification



Heavy-Duty Single Rear Axles for Port/Terminal Tractors



Heavy-Duty Single Rear Axles for Port/Terminal Tractors

Item	Part Number	Qty (per axle)	Description	Remarks
1	A1-333-Z-4602	2	Hub and Stud Assembly	
2	HM-220149	2	Inner Bearing Cone	99.975mm ID
3	HM-220110	2	Inner Bearing Cup	156.975mm OD
4	6580	2	Outer Bearing Cone	
5	6535	2	Outer Bearing Cup	
8	982108	2	O-Ring	248mm ID x 3mm
9	A-1205-P-2798	2	Oil Seal	
10	3191997	2	Ring Gear Carrier	
11	1227-S-1735	2	Nut	M80 x 2
12	1522380	2	Ring Gear	
13	1522392	2	Snap Ring	
14	3191854	2	Planetary Housing	
14a	A-3298-H-1230	2	Loaded Planetary Housing	
15	1522381	4	Planet Gear	
16	1522387	152	Needle Bearings	28mm x 6.5mm
17	1522388	4	Spacer Sleeve	
18	1522389	8	Washer, Steel	
19	1522390	8	Washer, Brass	
20	1522386	4	Bearing Spindle	
21	949721	4	O-Ring	26.2mm ID x 3mm
22	914463	4	Snap Ring	
23	3892-A-5981	2	Sun Gear	
24	1673500	4	Spring Washer	
25	1522393	2	Thrust Washer	
26	914532	2	Retaining Ring	
27	3262-G-1437	2	Hub Cap Cover	
28	955891	As Required	Shim	0.8mm
29	1523115	As Required	Pin	52mm
29	1523116	As Required	Pin	56mm
30	2297-W-8733	2	Magnet	
31	967581	2	Clip	10mm ID
33	10-X-1783	12	Hub Cover Bolt	M8 x 1.25 -16mm
34	949329	2	Plug Gasket	
35	981281	2	Oil Fill Plug	M24 x 1.5
36	959238	4	Hub Case Bolt	M10 x 1.5 - 25mm

Heavy-Duty Single Rear Axles for Port/Terminal Tractors

Item	Part Number	Qty (per axle)	Description	Remarks
1	See Bill of Materials	1	Housing	
2	3213-S-2182	2	Spindle	
3	See Bill of Materials	1	Brake Assembly w/Chamber - Left	
6	See Bill of Materials	1	Brake Assembly w/Chamber - Right	
7	1246-V-1244	4	Dowel	
8	1229-W-1557	28	Hardened Washer	
9	Not Sold Separately	2	Wheel End Assembly	See Page 2-3 for details
10	3123698	2	Drum	
11	See Bill of Materials	1	Carrier Assembly	
12	3802-S-2125	1	Axle Shaft - Right	w/ DCDL
13	3802-R-2124	1	Axle Shaft - Left	
14	5-X-1371	2	Spindle O-Ring	
15	949329	2	Plug Gasket	
16	981281	2	Magnetic Fill Plug	
17	A1199-W-4053	1	Breather	
18	MS216050N-2	8	Carrier to Housing Bolts	40mm
19	MS216070N-2	4	Carrier to Housing Bolts	60mm
20	See Bill of Materials	2	Brake Chamber	
21	1229-N-1626	4	Flat Washer	
22	NL210-1	4	Nut	
23	1229-S-2697	2	Flat Washer	
24	See Bill of Materials	1	Slack Adjuster - Right	
25	See Bill of Materials	1	Slack Adjuster - Left	
26	1229-N-4590	4	Shim	
27	1229-J-3130	4	Shim	
28	1229-D-2942	2	Snap Ring	
29	19-X-1116	2	Large Clevis Pin	
30	19-X-127	2	Small Clevis Pin	
31	2257-D-1174	2	Large Clip	
32	2257-C-1173	2	Small Clip	
33	1245-X-1064	2	Clevis	
34	MS216060A-2	28	Brake Spider to Housing Bolts	
35	MWA-516	12	Flat Washer	

For more information on brake parts, see **PB-8857** for 16.5" x 7" Cast Plus brake assemblies
 For More information on carrier parts, see **PB-9147** for 145 Series carriers

MERITOR AFTERMARKET PARTS WARRANTY

We warrant all new parts for one year from date of shipment to the buyer against defective material or workmanship (but not against damage caused by accident, abuse or improper installation, maintenance or repair) when such parts are used on vehicles the specifications of which have been approved by our Engineering Department.

As the exclusive remedy under this warranty, we will, at our option, repair or replace such parts free of charge, or take back the nonconforming parts and refund the monies paid by buyer for such parts, if found on examination by us to be nonconforming and if any necessary return charges are prepaid.

If it is necessary to return any parts under this warranty, buyer agrees not to make any deduction on account thereof from remittances on current accounts while claims are in the process of disposition. Any expense incurred without our consent for repairs or replacement will not be allowed.

THIS WARRANTY IS EXPRESSLY IN LIEU OF ALL OTHER WARRANTIES OR CONDITIONS, EXPRESS, IMPLIED OR STATUTORY, INCLUDING ANY IMPLIED WARRANTY OF MERCHANTABILITY OR FITNESS FOR PARTICULAR PURPOSE. IN NO EVENT SHALL SELLER BE LIABLE FOR INCIDENTAL OR CONSEQUENTIAL DAMAGES OF ANY NATURE.

Only genuine Meritor replacement parts are covered by this aftermarket parts warranty.



Information contained in this publication is in effect at the time the publication was approved for printing and is subject to change without notice or liability. Meritor Heavy Vehicle Systems, LLC, reserves the right to revise the information presented or discontinue the production of parts described at any time.

Meritor Heavy Vehicle Systems, LLC
7975 Dixie Highway
Florence, KY 41042 USA
888-725-9355
www.arvinmeritor.com
XpresswayPlus.arvinmeritor.com

Revised 10/2010
PB-1037
© 2010 ArvinMeritor, Inc.